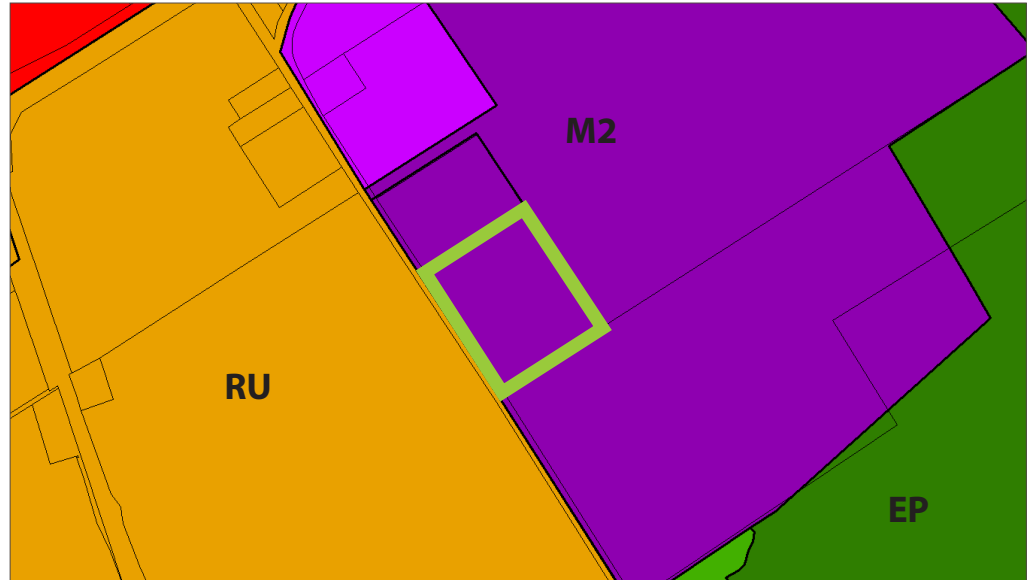




INDUSTRIAL DEVELOPMENT OPPORTUNITY

1053 BREBEUF ROAD



ZONING: Industrial Zone (M2-H)

QUICK FACTS:

OFFICIAL PLAN DESIGNATION:

- Employment Area

LAND SIZED:

- Frontage: 242.37 m
- Depth: 201.87 m
- Area: 4.88 ha

PROPERTY STATUS:

- Undeveloped

ASSESSMENT ROLL NUMBER
4374-010-011-46000

PERMITTED USES:

Asphalt Batching Plant
Automobile Body Shop
Automobile Service Station
Bulk Aggregate Storage and Processing
Concrete Mixing Plant
Construction Equipment Rental Business
Eating Establishment
Enclosed Warehousing and Storage
Factory Outlet
Food Processing Plant
Manufacturing Facility
Multi Occupancy Industrial Building
Pit and Quarry
Public Use
Radio and Communications Use
Tow Truck Depot and Storage Yard
Transportation Terminal
Welding and Metal Fabrication Plant

PLANNING AND BUILDING SERVICES

WES CROWN, DIRECTOR

wcrown@midland.ca (705) 526-4275 x2215

ANGELA ZHAO, PLANNER

azhao@midland.ca (705) 526-4275 x2214

TOWN OF MIDLAND

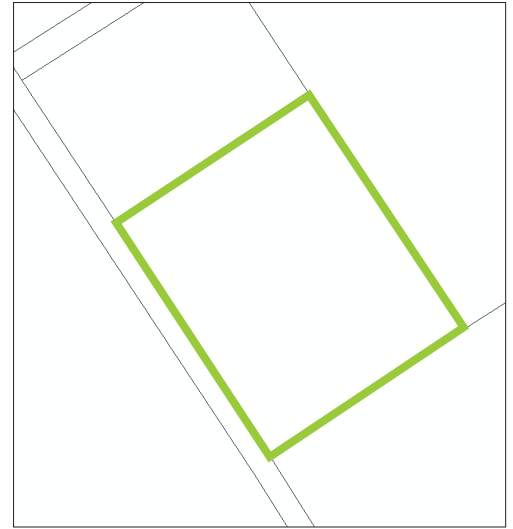
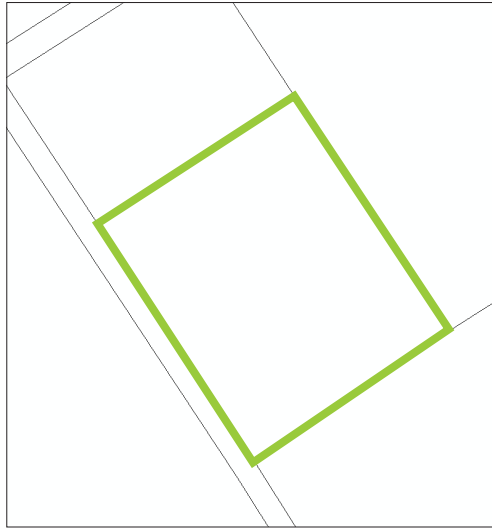
575 Dominion Avenue
Midland, Ontario
L4R 1R2




PHONE (705) 526-4275



FAX (705) 526-9971



1053 BREBEUF ROAD: SERVICING AND AIR PHOTO



	Storm Sewer Line
	Sanitary Sewer Line
	Sanitary Sewer Lateral

	Water Service Main
	Water Service Line

PLANNING AND BUILDING SERVICES

WES CROWN, DIRECTOR

wcrown@midland.ca (705) 526-4275 x2215

ANGELA ZHAO, PLANNER

azhao@midland.ca (705) 526-4275 x2214

TOWN OF MIDLAND

575 Dominion Avenue

Midland, Ontario

L4R 1R2

PHONE (705) 526-4275

FAX (705) 526-9971