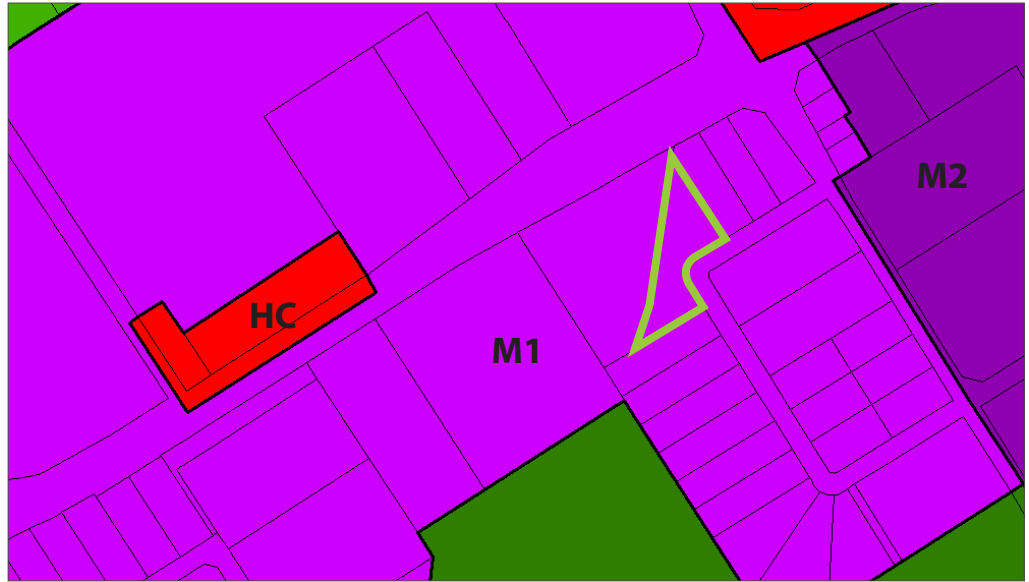




INDUSTRIAL DEVELOPMENT OPPORTUNITY

279 WHITFIELD CRESCENT



ZONING: Industrial Zone (M1)

QUICK FACTS:

OFFICIAL PLAN DESIGNATION:

- Employment Area

LAND SIZED:

- Frontage: ≈ 95.19 m
- Depth: ≈ 82.47 m
- Area: ≈ 0.73 ha

PROPERTY STATUS:

- Undeveloped

ASSESSMENT ROLL NUMBER
4374-020-015-41000

PERMITTED USES:

- | | |
|--|--|
| Adult Entertainment Parlor | Fitness Club |
| Ambulance Depot | Laboratory |
| Animal Hospital | Manufacturing Facility |
| Attached Accessory Dwelling Unit | Marina Dry Land |
| Auction Centre | Mobile Fast Food Facility |
| Automobile Body Shop | Multi Occupancy Industrial Building |
| Automobile Car Wash | Office Uses Accessory to a Permitted Use |
| Automobile Gas Bar | Place of Assembly |
| Automobile Sales Agency | Printing Establishment |
| Automobile Service Station | Private Club |
| Banquet Hall | Professional Office |
| Catering Establishment | Public Use |
| Child Care Centre | Radio and Communication Use |
| Commercial Entertainment Establishment | Recreational Vehicle and Vessel |
| Commercial School | Sales and Rental Agency |
| Conference Centre | Rent-all Shop |
| Contractors Shop | Self Storage Units |
| Data Processing Center | Training and Rehabilitation Centre |
| Eating Establishment | Welding and Metal Fabrication Plant |
| Enclosed Warehouse and Storage | |
| Factory Outlet | |

PLANNING AND BUILDING SERVICES

WES CROWN, DIRECTOR

wcrown@midland.ca (705) 526-4275 x2215

ANGELA ZHAO, PLANNER

azhao@midland.ca (705) 526-4275 x2214

TOWN OF MIDLAND

575 Dominion Avenue

Midland, Ontario

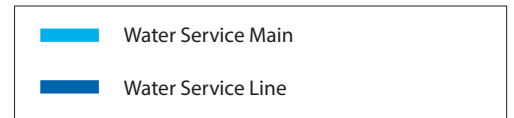
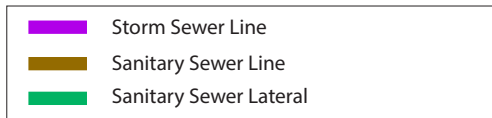
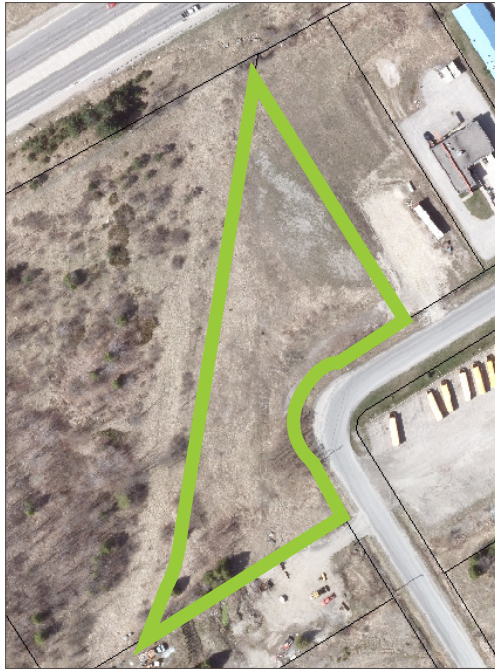
L4R 1R2

PHONE (705) 526-4275

FAX (705) 526-9971



279 WHITFIELD CRESCENT: SERVICING AND AIR PHOTO



279 WHITFIELD CRESCENT: SITE PHOTOS



North view from Whitfield Crescent



South view from Whitfield Crescent

PLANNING AND BUILDING SERVICES

WES CROWN, DIRECTOR
wcrown@midland.ca (705) 526-4275 x2215

ANGELA ZHAO, PLANNER
azhao@midland.ca (705) 526-4275 x2214

TOWN OF MIDLAND

575 Dominion Avenue
Midland, Ontario
L4R 1R2

PHONE (705) 526-4275
FAX (705) 526-9971