

# ECONOMIC VALUE OF AGRICULTURE

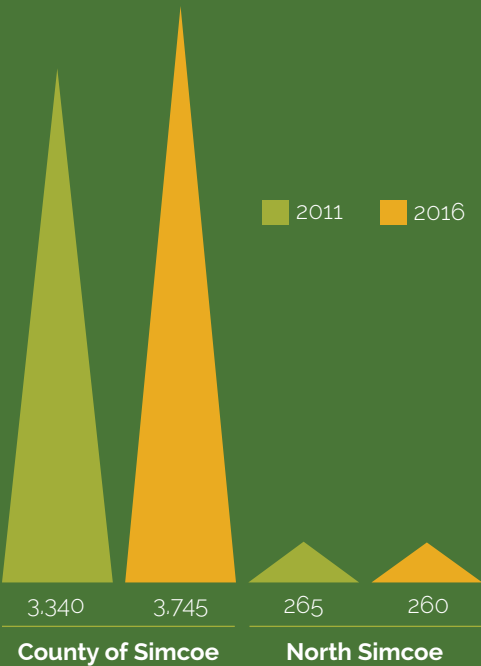
Agriculture and agri-food play an **important role** in the federal and provincial economies. In Canada, the industries **provide 1 in 9 jobs**, employ **2 million** people and account for 7% of total gross domestic product (GDP).

The North Simcoe Agriculture sector adds **\$6.3 million** in wages to the economy and **260 jobs**. Agriculture production is booming in North Simcoe even though there is a slight decrease in jobs since 2011.

It is predicted that by 2024, the County of Simcoe population will increase by 11%! That's an increase of **50,000 people** in six years. We rely on the Agriculture sector not only for 3,745 jobs in the County, but also for providing local resources such as fresh crops and products for animals all around.

North Simcoe is home to 260 jobs in the Agriculture sector providing **\$84 million** worth of exports for North Simcoe. Agriculture ranks as the ninth biggest exporter for the area.

# AGRICULTURAL EMPLOYMENT



**The North American Industry Classification System (NAICS)** is used to classify business establishments according to type of economic activity.

The Agricultural industry is broken down into codes 111, 112, 114, 1151 and 1152 which includes establishments or services such as:

- ✂ Farms, orchards, greenhouses, nurseries and other places that grow crops, plants or trees
- ✂ Ranches, farms, feedlots and other places that raise animals, produce animal products or fatten animals
- ✂ Fishing and trapping activities
- ✂ Agricultural support services such as planting, harvesting or management

Source: Statistics Canada, 2016 Census of Agriculture

# AGRICULTURE AND AGRI-FOOD SYSTEM



The agriculture and agri-food system encompasses several industries including farm input and service suppliers, primary agriculture, food and beverage processing, food distribution, retail, wholesale and foodservice industries.

# NORTH SIMCOE'S STRATEGIC LOCATION

Connected to thriving business and commercial centres by highways and air, North Simcoe is an exceptional strategic location, allowing ease of movement of products throughout Canada, the United States and the world. The close proximity of Highway 400, accessible primarily via arterial highways 12 and 93, provides the primary transportation corridor for both supplies and finished product. For more time-sensitive shipments, Huronia Airport has a 4,000-foot asphalt runway along with support services ranging from aircraft manufacturing to aviation fuel and pilot training.

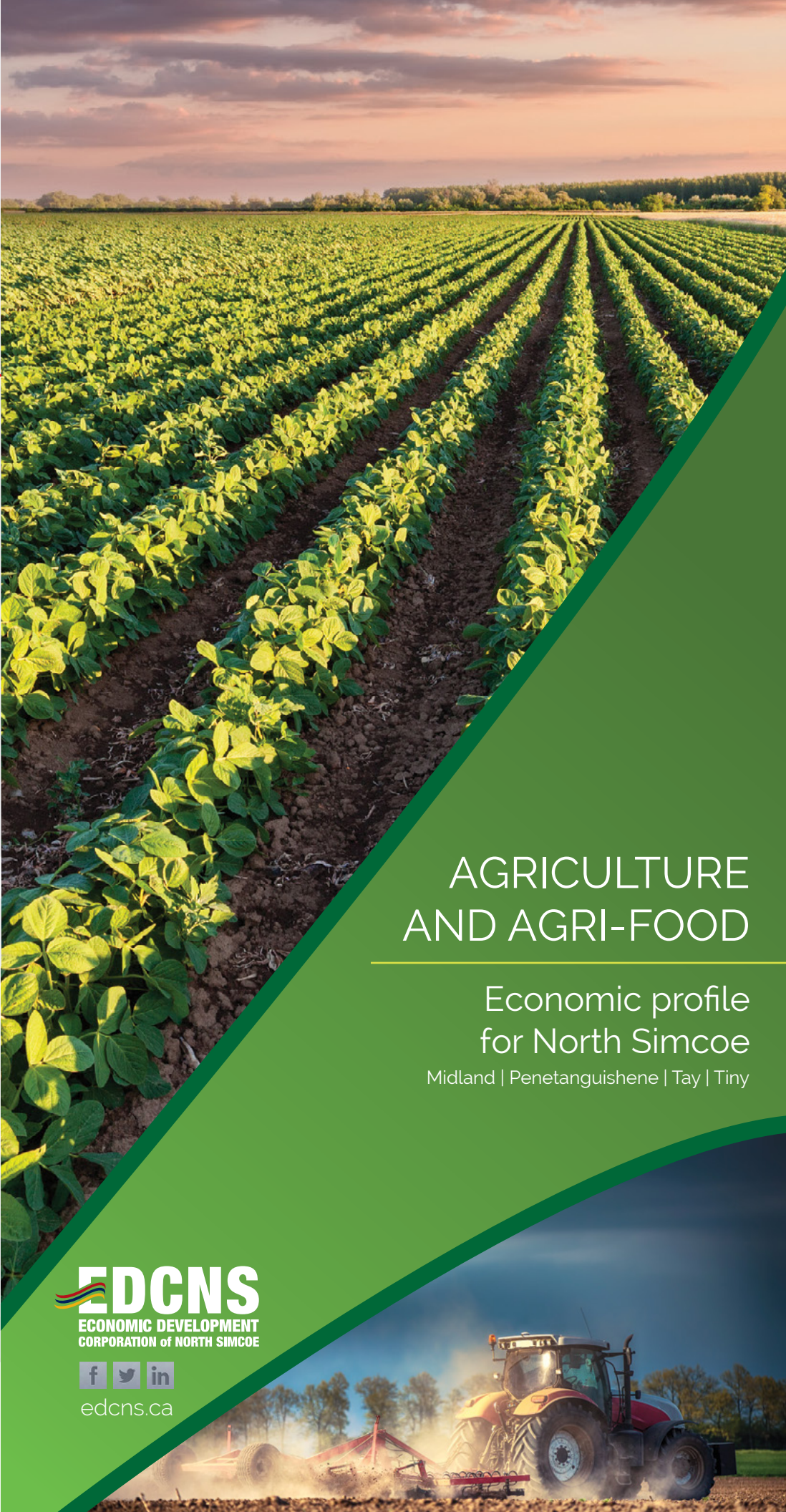
# GET CONNECTED WITH

- Conversation** 705.526.1371 x 114  
info@edcns.ca
- Connection**   
edcns.ca
- Collaboration** Economic Development Corporation of North Simcoe  
105 Fourth Street  
PO Box 8  
Midland, ON L4R 4K6



# AGRICULTURE AND AGRI-FOOD

Economic profile  
for North Simcoe  
Midland | Penetanguishene | Tay | Tiny





THE MANY ROLES IN AGRICULTURAL ECONOMIC DEVELOPMENT



PROMOTER

- Local food map
- Community agricultural profile
- Local/regional branding initiatives



CONNECTOR

- Local food conference
- Dinner on the Farm
- Value-chain analyses



EDUCATOR

- Evaluating value-added opportunities workshops
- Food-E entrepreneurship seminars
- On-farm familiarization tours



ENABLER

- Agricultural/rural community improvements plans
- Official plan updates: language supporting on-farm value-added processing
- One-window municipal services



ORGANIZER

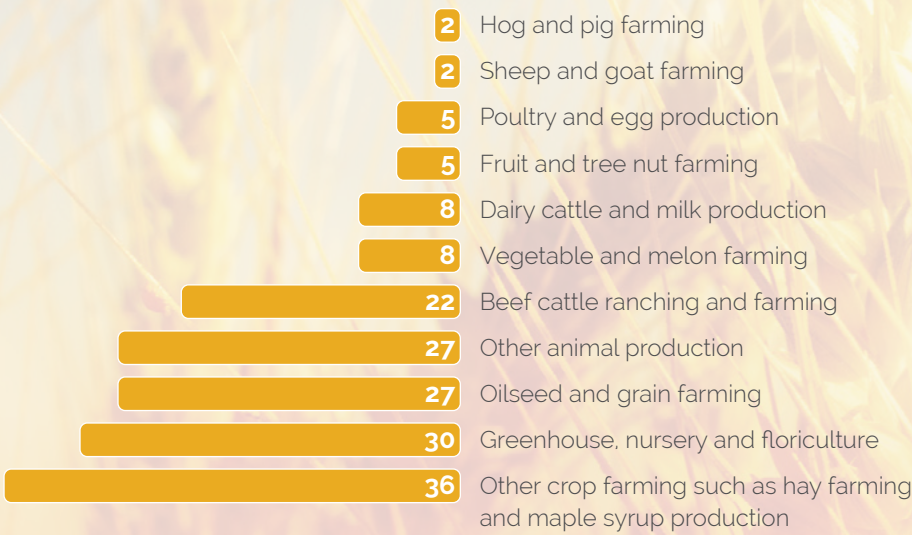
- Agricultural economic development strategic planning
- Local/regional farmers' markets
- Agricultural advisory committee

NORTH SIMCOE FARM INDUSTRY

The **172 farms** in North Simcoe consist of a variety of different farms which focus on a diverse group of industries. Having such a diverse industry within the North Simcoe area allows for **almost 30%** of North Simcoe's agricultural needs to be met by the local farms.

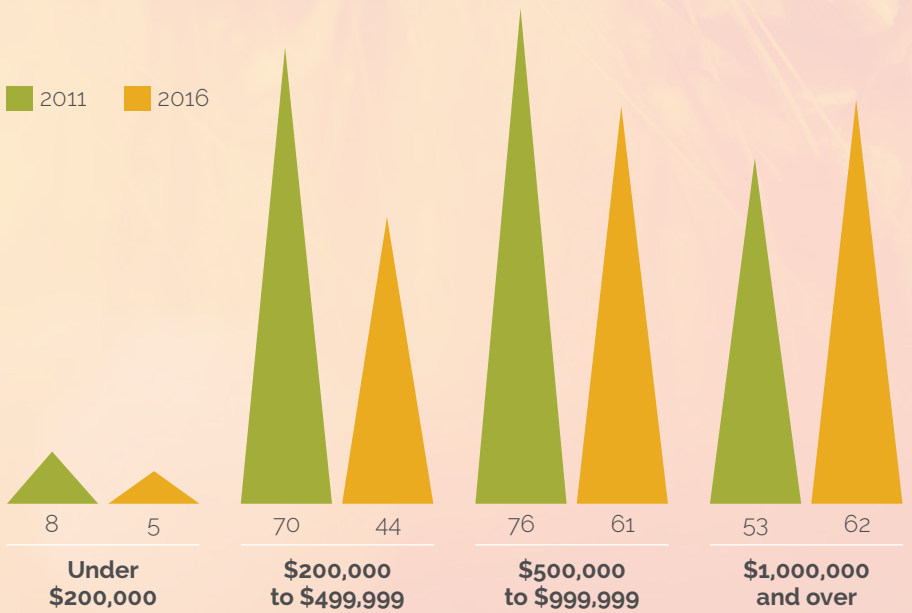


FARMS BY INDUSTRY GROUP



AGRICULTURAL CAPITAL VALUE

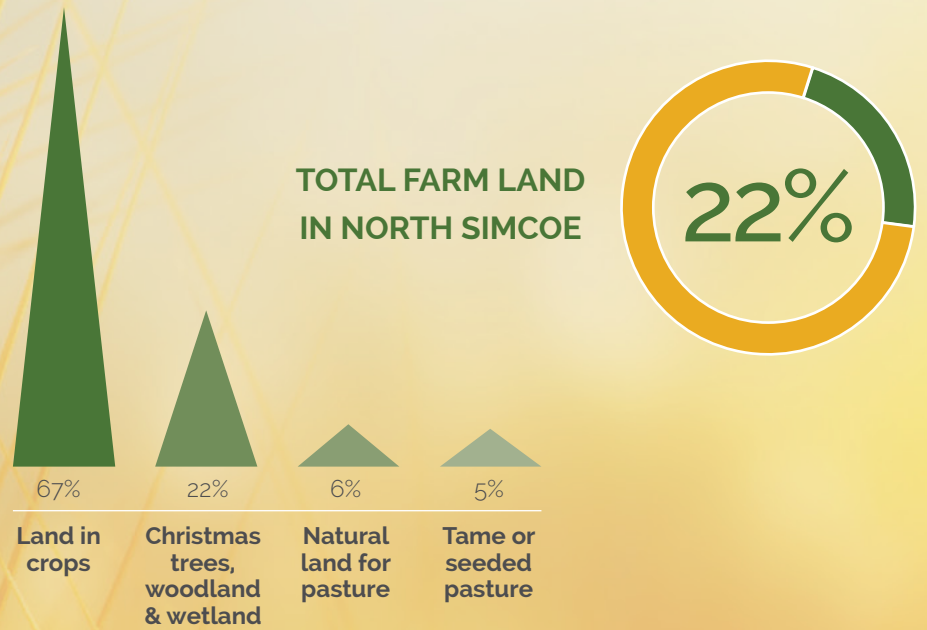
The capital value of farming has increased although the number of farms has decreased by 17% from 2011 to 2016. Nine more farms report a capital value of over **one-million dollars** compared to 2011.



Source: Statistics Canada, 2016 Census of Agriculture

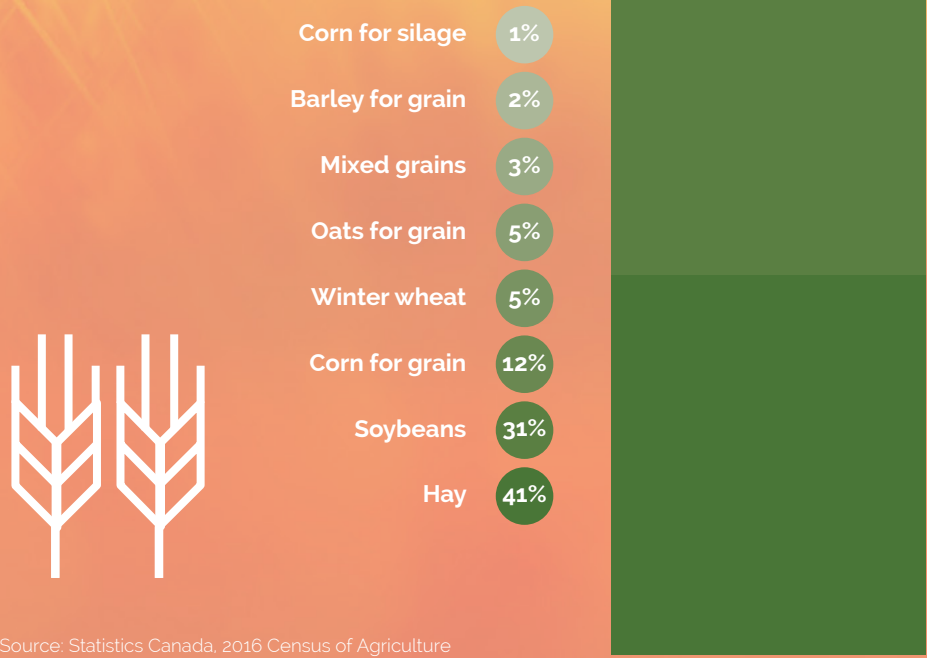
AGRICULTURAL LAND ANALYSIS

In North Simcoe alone, there are 29,679 acres of farm land. Stretched across 172 farms, this averages **173 acres** per farm. Even with the decrease of 25 farms since 2011, the average acre per farm dropped only by one acre. Total farm land accounts for **22%** of North Simcoe acreage.



WHAT'S GROWING IN NORTH SIMCOE

North Simcoe is home to a wide variety of crops, from barley to soybeans. Not only does this provide a wide variety of exports for the area, it also shows that Agriculture in North Simcoe continues to thrive.



Source: Statistics Canada, 2016 Census of Agriculture